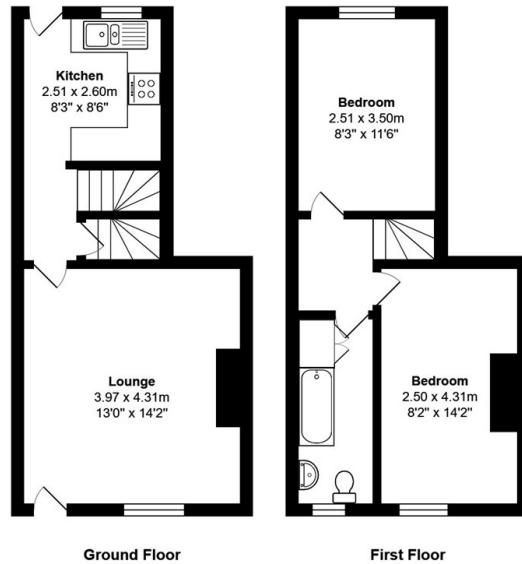




11 Market Street, Steeton, BD20 6NN

£795 PCM

- Two Bedroom Terrace
- Back Yard
- EPC Rating - D
- Beautifully Presented
- Close to Local Amenities
- Tenancy Term - Ask Agent
- Neutrally Decorated
- Council Tax Band -A



Total Area: 57.5 m² ... 619 ft²
 All measurements are approximate and for display purposes only



Directions

Viewings

Viewings by arrangement only. Call 01535 636238 to make an appointment.

Council Tax Band

A

EPC Rating:

D

Energy Efficiency Rating		Current	Potential
<i>Very energy efficient - lower running costs</i>			
(92 plus) A			
(81-91) B			85
(69-80) C			
(55-68) D		66	
(39-54) E			
(21-38) F			
(1-20) G			
<i>Not energy efficient - higher running costs</i>			
England & Wales		EU Directive 2002/91/EC	